

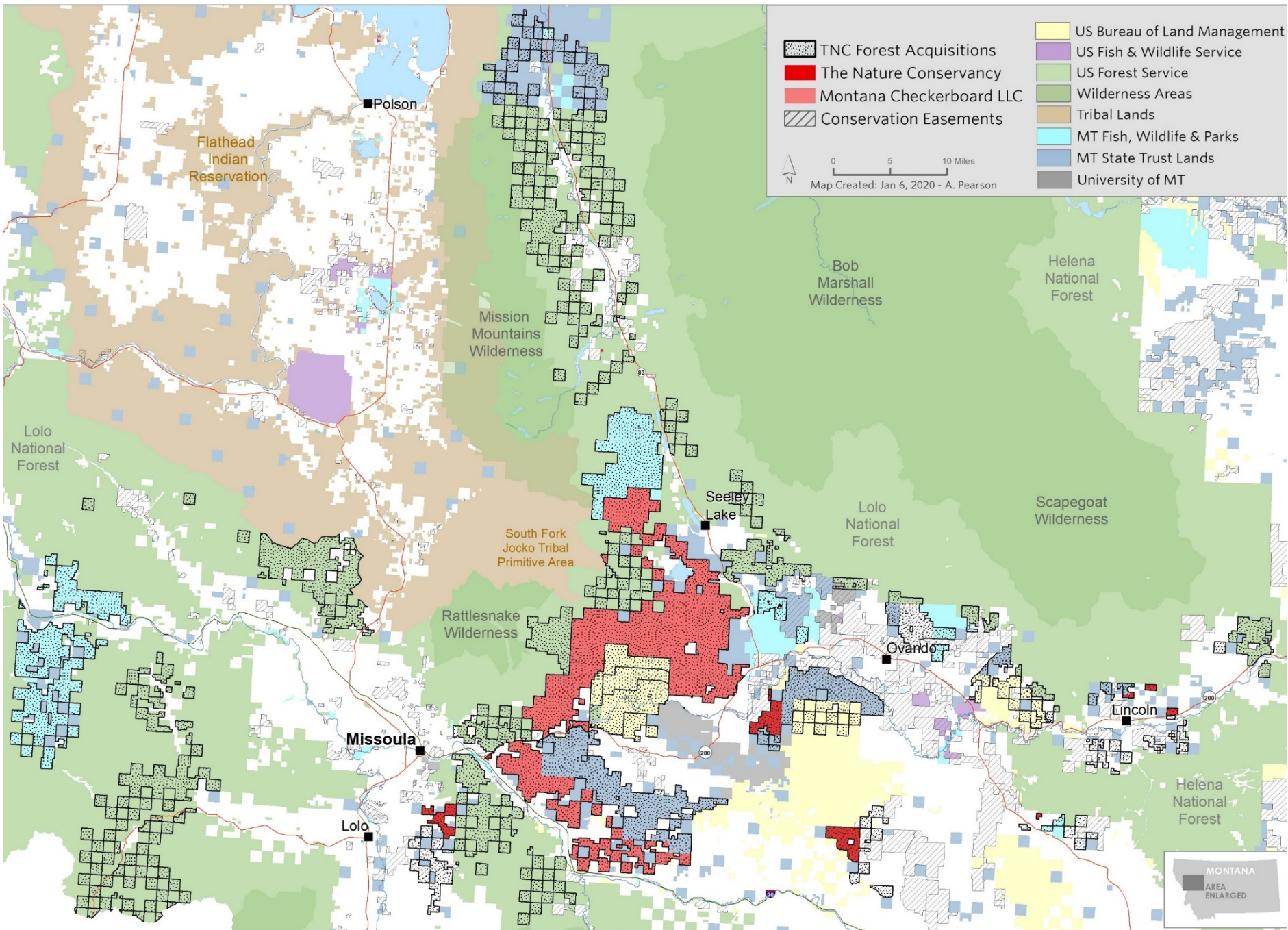
Twenty Years of Conservation and Restoration of Plum Creek Timberlands

Steven Kloetzel, W MT Land Steward

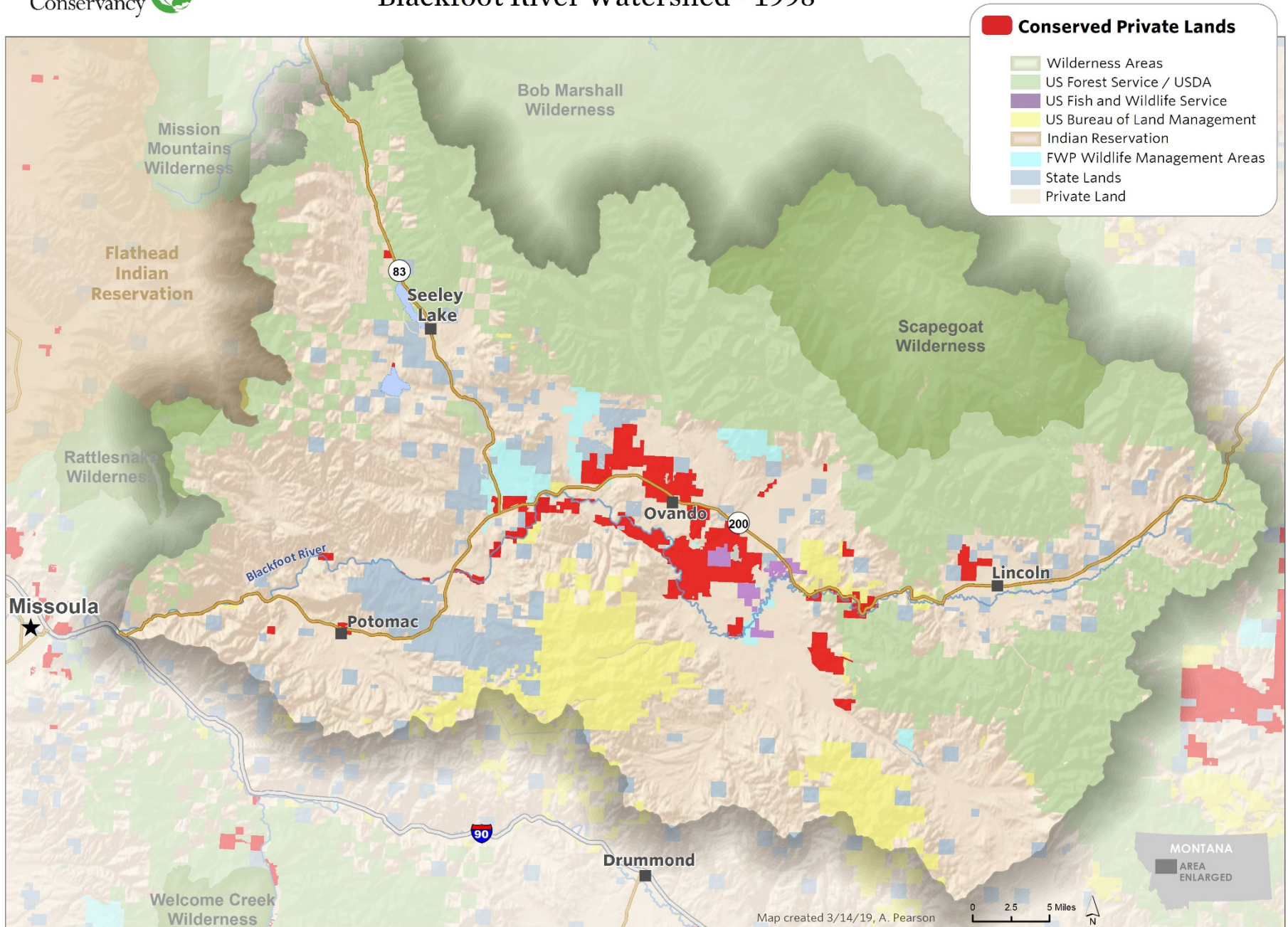
җest sчlux^w, pesya?



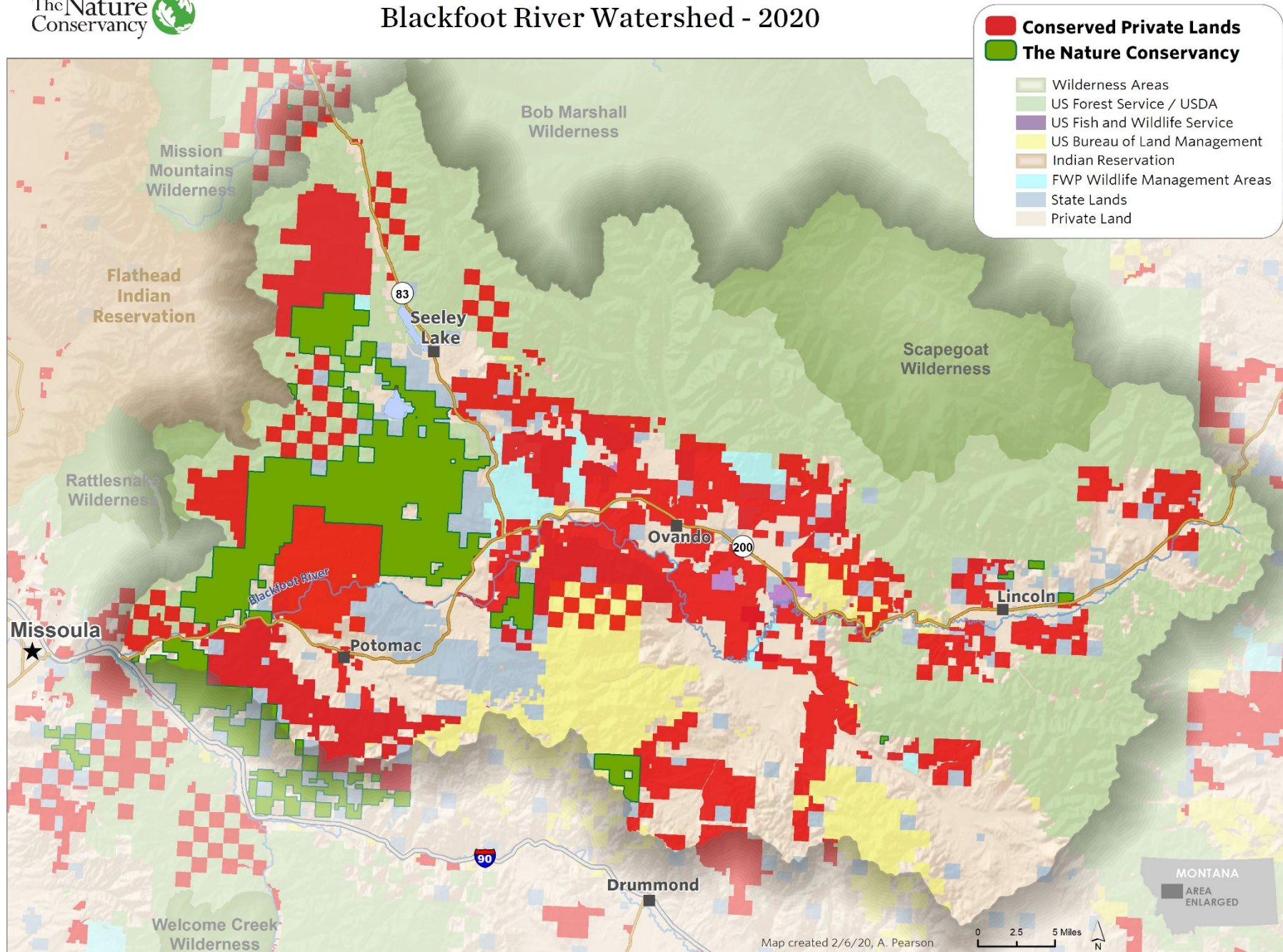
TNC Forest Acquisitions & Transfers



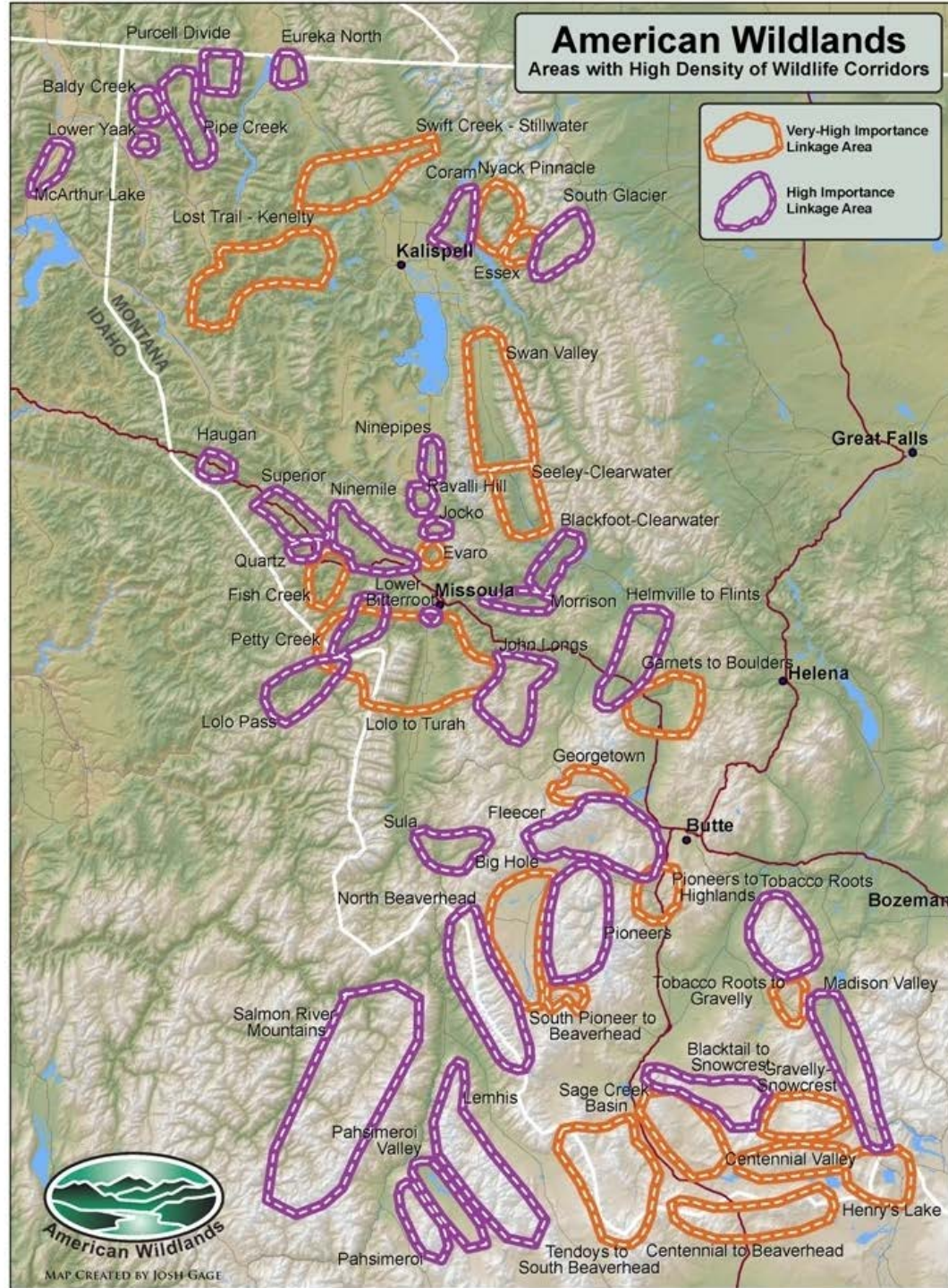
Blackfoot River Watershed - 1998



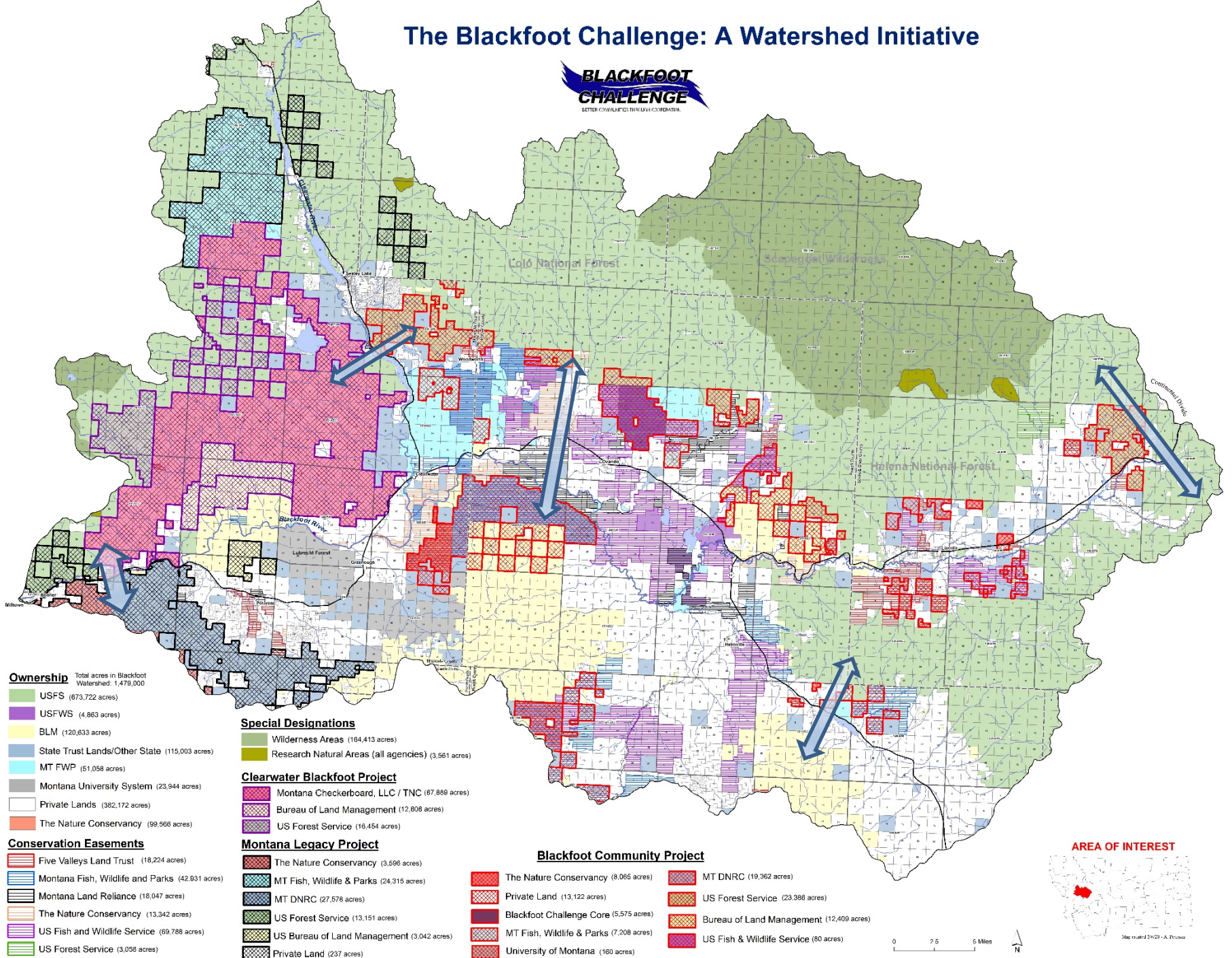
Blackfoot River Watershed - 2020

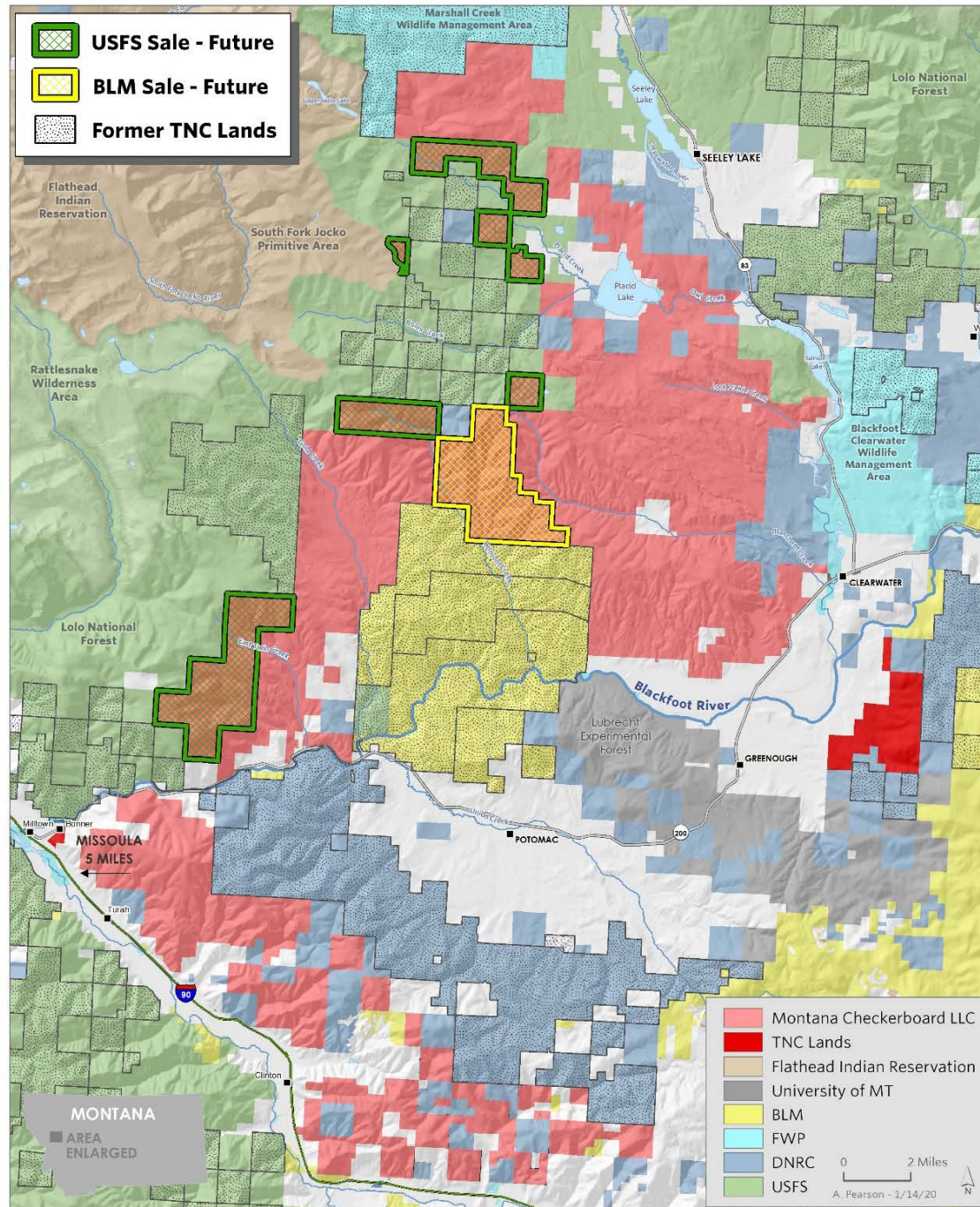


2010



The Blackfoot Challenge: A Watershed Initiative





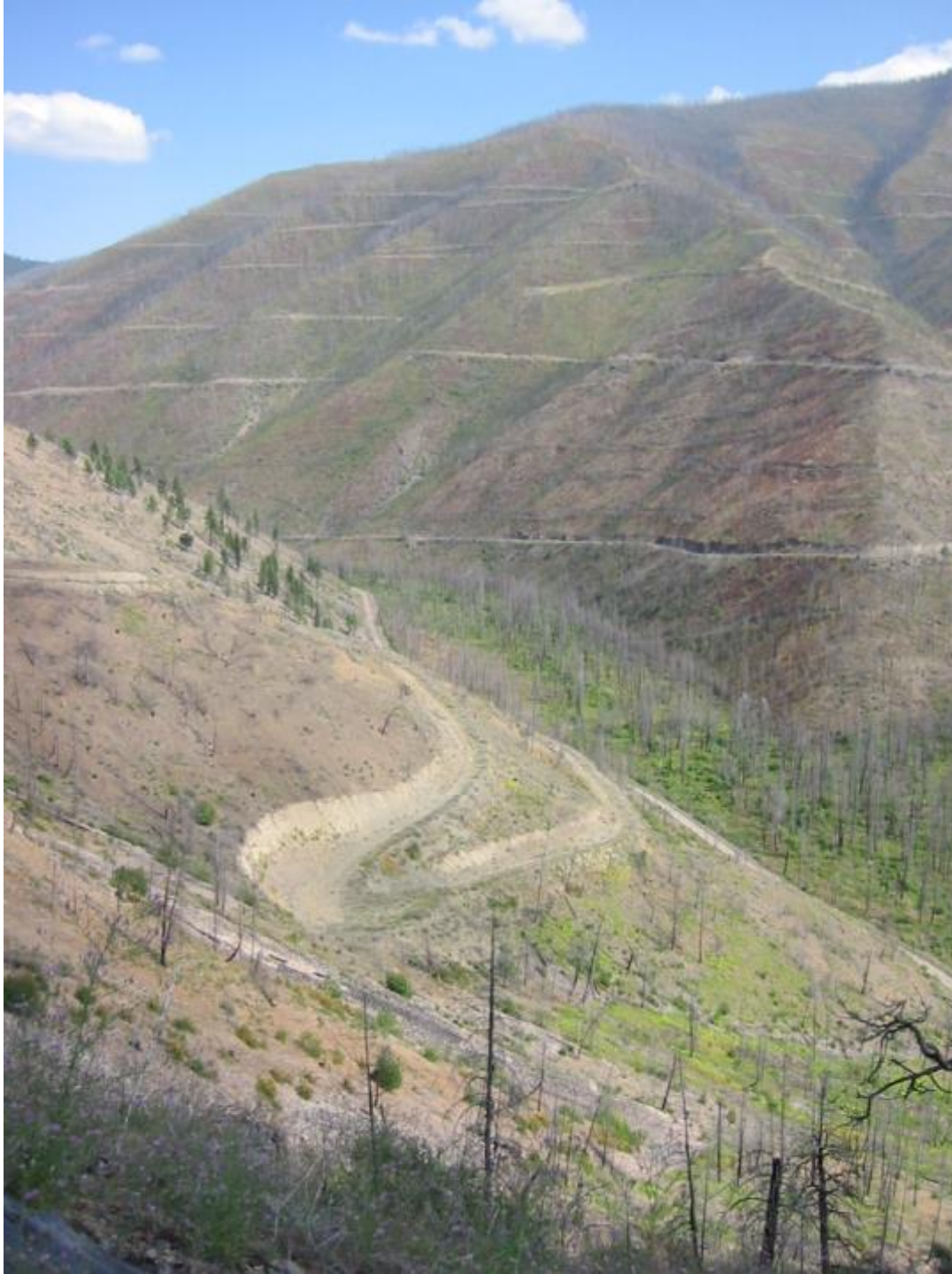
Barriers to Restoration...



What is Restoration?

- Fire!
- Cultural
- Forestry
- Fisheries recovery
- Enhancing rare species/communities
- Road “storage”
- Planting enhancements – seed, plant, cage...
- Weed management?



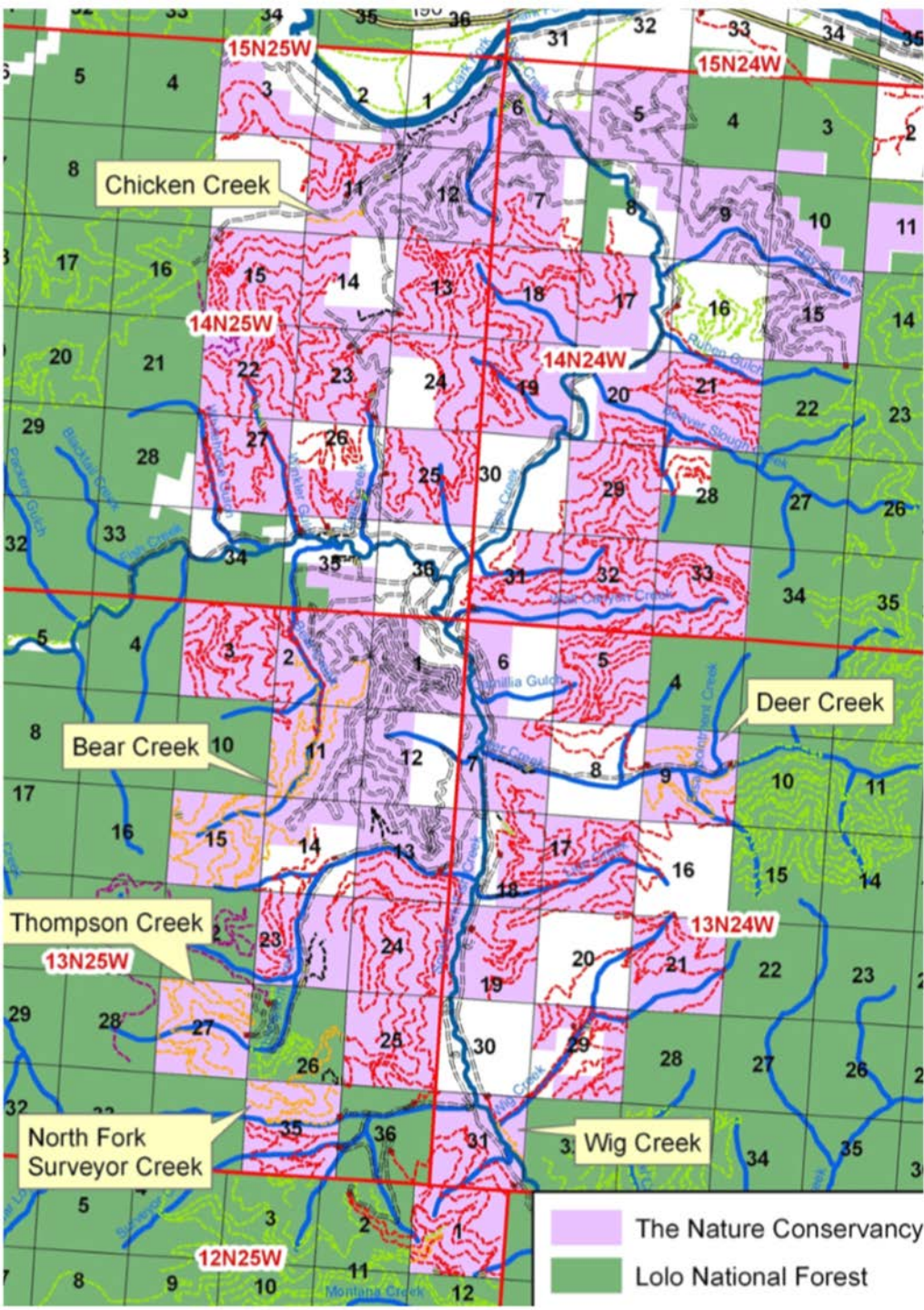


Fish Creek WMA

(Deer Creek
Section 9, spring 2009)

Fish Creek WMA and State Park 2009 “restoration”

- *Removed 38mi roads*
 - LNF Level 3
 - Or Full Oblit
- *Gated 5mi open rds*
- *Treated/seeded 100mi roads*
- *Removed top 10 priority CMPs*
- *Removed 35 secondary CMPs*





North Fork Surveyor Ck



Bear Ck Headwaters, Fish Creek WMA, April 2010



TNC Montana Forests

2019 Stewardship Highlights

- 790 acres of restorative forest thinning in 2019 - mostly grant funded, some timber \$ (*plus assist on 850 ac, FWP*)
- One Rx Burn completed (80ac), two burns in planning & prep phase for Spring'20 (*plus assist on 300 ac, BLM*)
- Collaborative management expanding with CS&K Tribes (*Elders, placenames, Rx burns, thinning, planting...*)
- Three community Trails Systems, engaging partners and communities in conservation & restoration
- Four collaborative science projects with UM & RMRS researchers (*BDAs, Forest Carnivore monitoring, Lynx Thinning, Post-fire Reforestation*)
- Weed mgmt: 865 acres of treatments; 72 biocontrol release sites
- Three native fish restoration projects underway (*Douglas, Boles, Ltl Park Ck. Partners: BBCTU, FWP, CFC, LNF*)

- ✕ Completed Prescribed Fire
- ✕ Planned Prescribed Fire
- Completed Forestry Treatments
- Planned Forestry Treatments

Flathead
Indian
Reservation

South Fork Jocko
Primitive Area

Lolo National
Forest

- TNC Lands
- Montana Checkerboard LLC
- Flathead Indian Reservation
- University of Montana
- US Bureau of Land Management
- MT Fish, Wildlife & Parks
- MT State Lands
- US Forest Service

Montana Forests 2020

Primm Rx

Hill 16 CTS

Lost Prairie

Blackfoot -
Clearwater
Wildlife
Management
Area

Lolo National
Forest

Mt
Dean
Stone

MISSOULA

Rattlesnake Creek

Dunnigan Rx

Lubrecht
Experimental
Forest

Blackfoot River

Baldy
Mtn
Forest

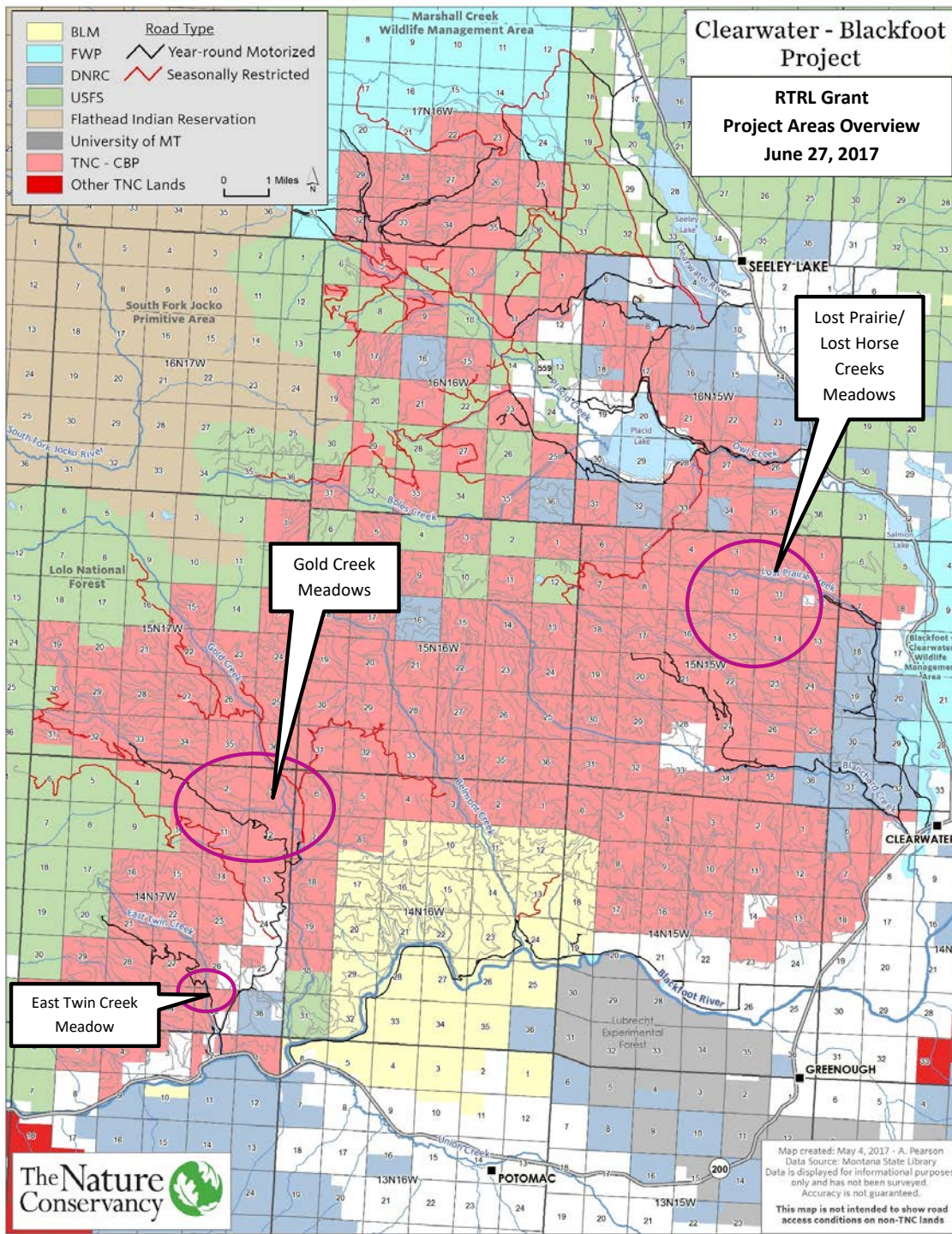
0 2.5 5 Miles

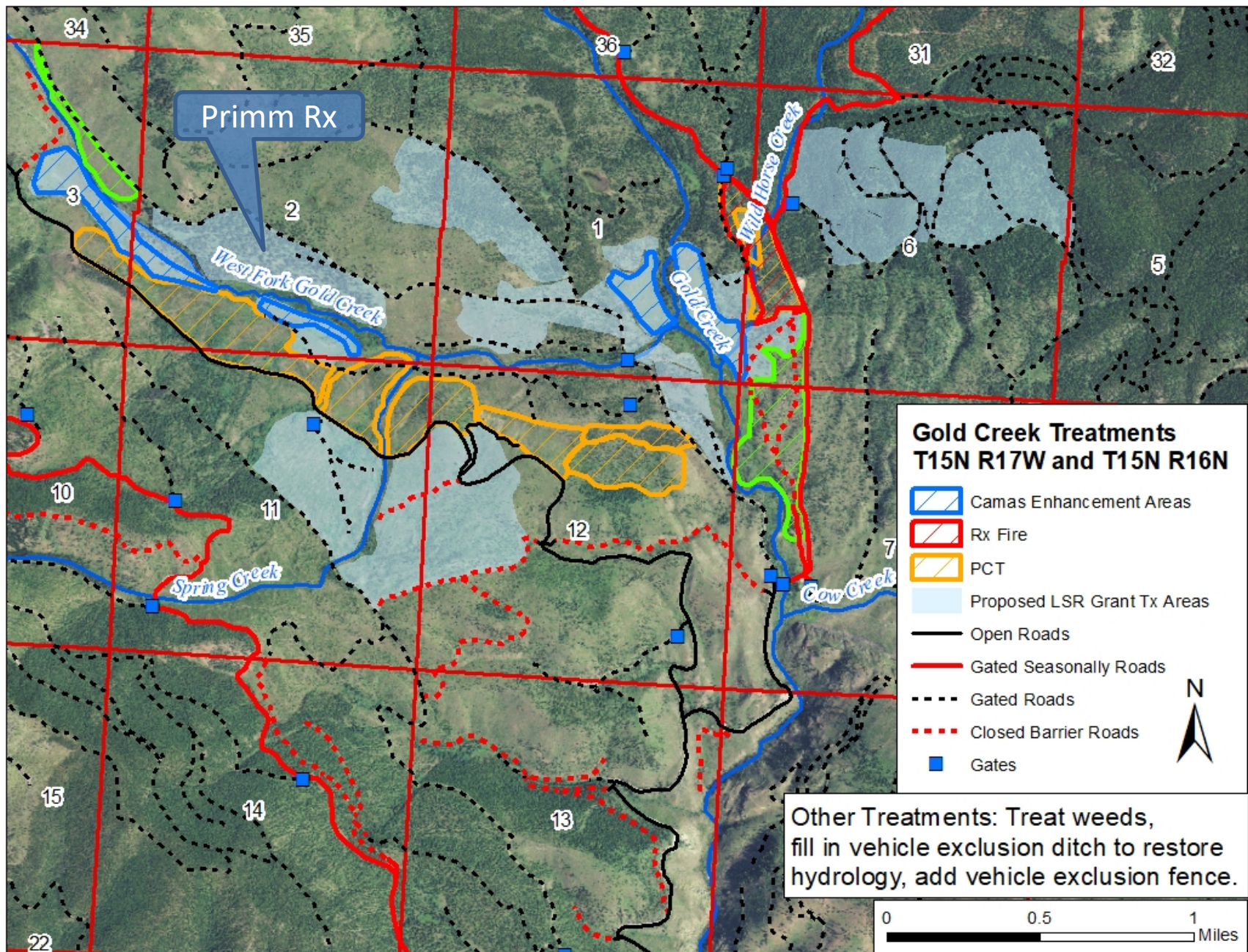
A. Pearson - 2/3/2020

MONTANA
AREA
ENLARGED





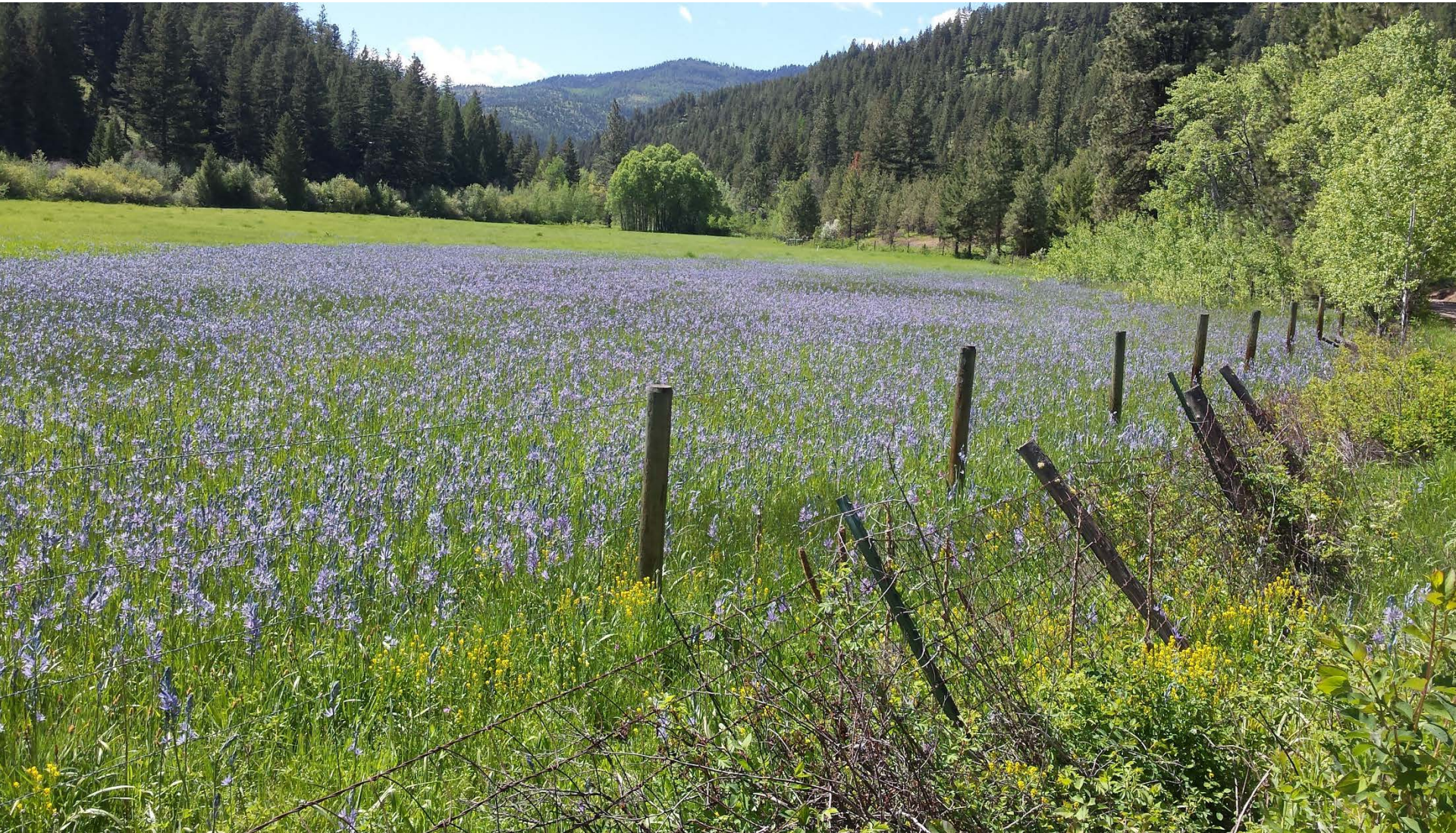






Sx̣weli, Qal'sá or Epl̥ itx̣w̥e?

(Potomac Valley)



Lost Prairie

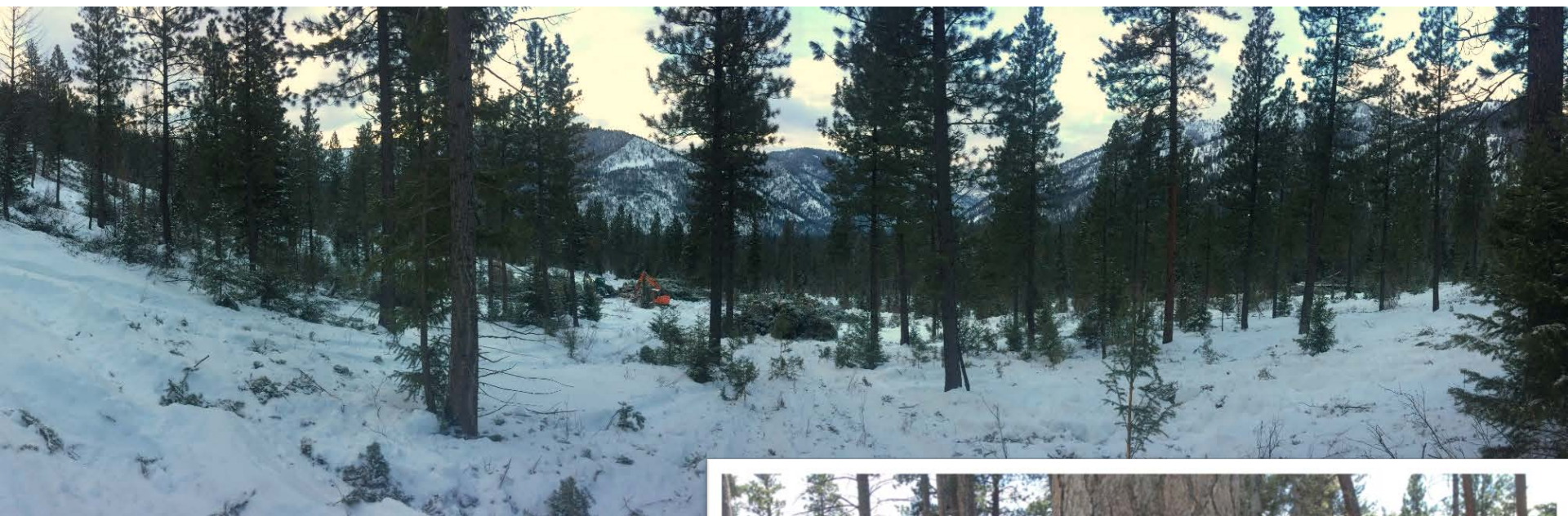


Weed management



Forest Restoration Thinning











Lolo NF, Horseshoe Hills Rx, May 2017

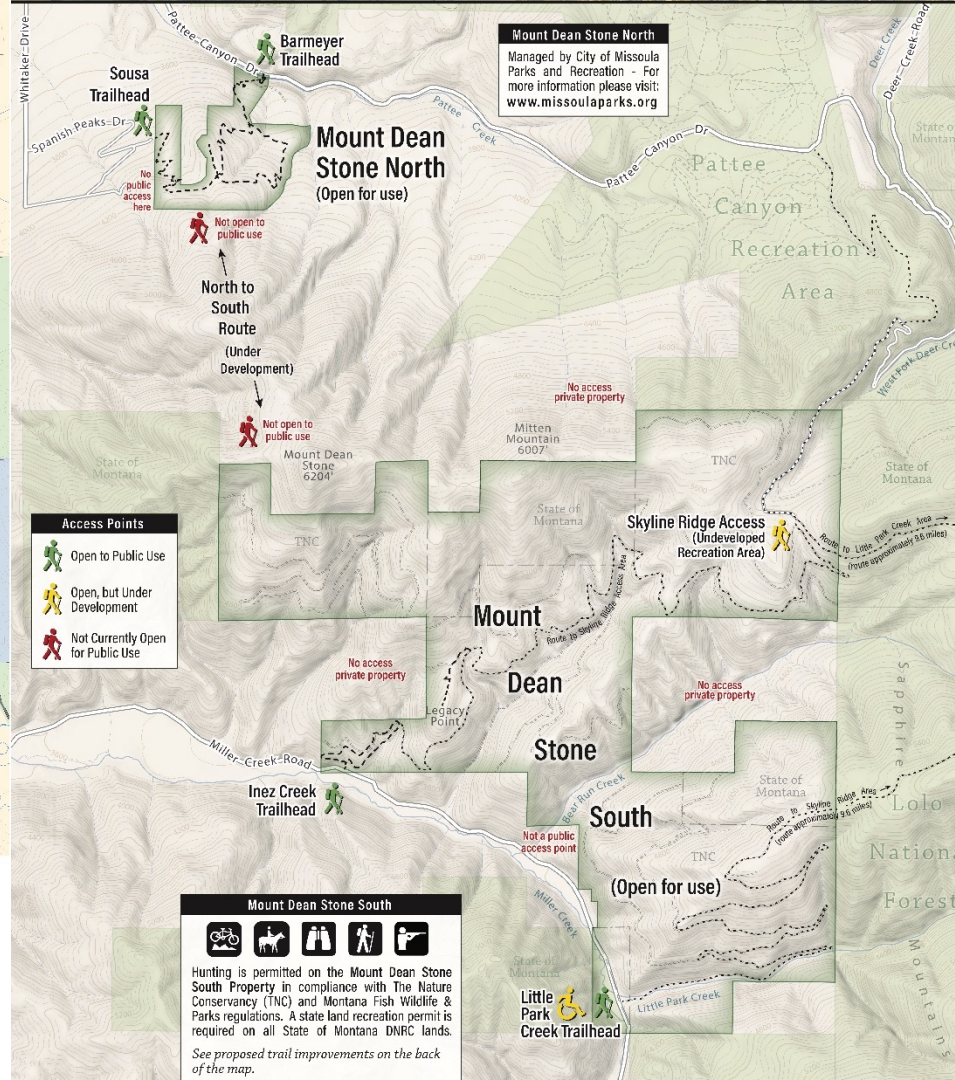
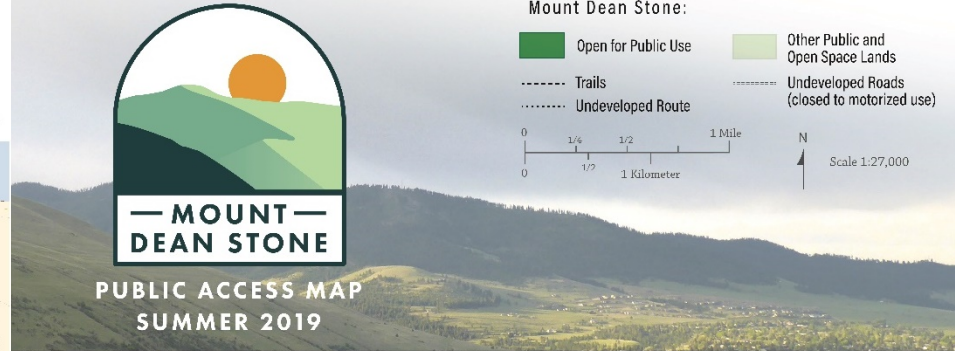
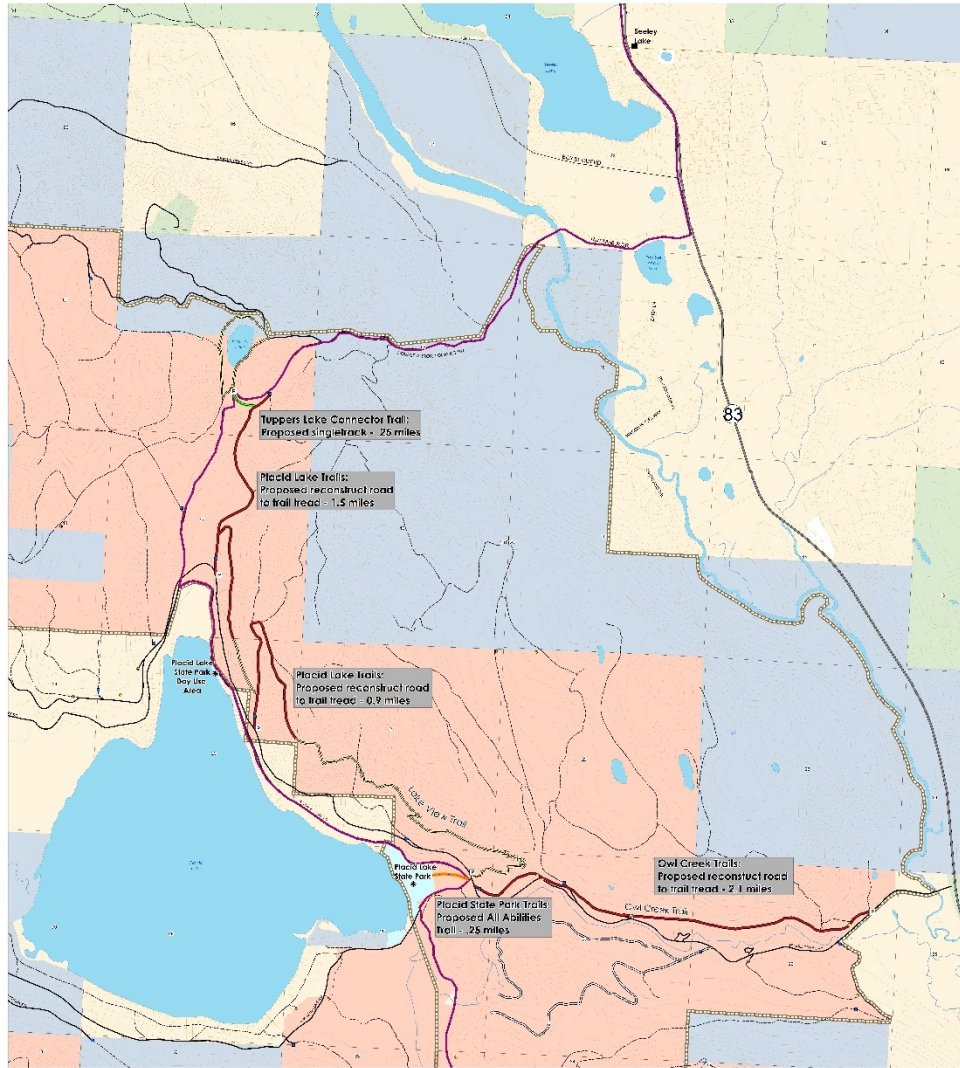
Controlled Burns in Forests and Meadows



Hill 16 Community Trails Project Proposed Phase 2



All proposed trail, road, and recreation uses shown on this map are subject to further review by TNC and Montana agencies. Final routes and designs are subject to local and state regulations, cultural values, and other factors.



Questions/Discussion

